

SAMSUNG



SAMSUNG

\*This device and related software is not intended for use in the diagnosis of disease or other conditions, or in the cure, mitigation, treatment or prevention of disease.

\*\*Not available on all networks.

†This device has been tested and received an IP (Ingress Protection) rating of IP67, which tests for dust intrusion and for water submersion up to 1 meter for up to 30 minutes. Not shockproof. Covers must be tightly closed.

††Your use of Samsung Smart Switch™ is subject to the terms of use at [www.samsungsmarts witch.com](http://www.samsungsmarts witch.com). Certain content (such as DRM-protected content) may not be compatible. Consult any applicable terms and conditions with your content providers to ensure that you have rights to transfer content off your previous device.

© 2014 Samsung Telecommunications America, LLC. Samsung, Galaxy S, The Next Big Thing Is Here, S Health, Milk Music, Smart Switch and Super AMOLED are all trademarks of Samsung Electronics Co., Ltd. Android, Google, Google Play, Chrome, Google Mobile, Google Drive, Gmail, Google+, Hangouts, Google Maps, Google Voice Search, YouTube and other marks are trademarks of Google Inc. Other company and product names mentioned herein may be trademarks or registered trademarks of their respective owners. Screen images simulated. Appearance of device may vary. Printed in U.S.A.

THE NEXT BIG THING IS HERE™

Samsung GALAXY S<sup>5</sup>



Introducing the  
Samsung Galaxy S<sup>®</sup> 5 –  
a stunning, innovative new  
smartphone experience that  
truly impacts your everyday life.





## Big, Bold 5.1" HD Display

---

Our best display technology shines on the Galaxy S<sup>®</sup> 5, delivering a clearly better HD experience. Full HD 1080p clarity, richer colors and faster response times breathe life into everything you watch.



# 16 Megapixel Camera With Fast Autofocus

The camera on the Galaxy S<sup>®</sup> 5 snaps photos in a split-second so you don't miss any of the action. Professional photography features and the all-new Studio editing suite let you enhance, tweak and even collage your favorite shots.

## Try It Out – Use the Selective Focus Feature

- Launch Camera
- Touch the **Selective Focus** icon (two silhouettes next to each other)
- Hold the camera steady and take your picture
- Touch the photo thumbnail
- Touch the **Edit** icon (two silhouettes next to each other with a pencil)
- Select **Near**, **Far** or **Pan Focus** effect
- Touch **Done** to save your edited photo





## S Health™

---

S Health\* is the workout partner that helps you track your steps, map out exercises, set fitness goals, challenge your friends and earn progress medals. It's the wellness center you can always keep by your side.

## Durable Design

---

The Galaxy S® 5 is built to handle your busy life. It is both dust- and water-resistant†, so it can keep up with you no matter where you go. So a little dust, dirt or rain won't keep you from staying connected.

# Heart Rate Monitor

---

The Galaxy S® 5 comes equipped with a never-before-seen built-in heart rate sensor. This first-of-its-kind integrated health tool responds to your touch and measures your heart rate using S Health.™

## Try It Out – Measure Your Heart Rate

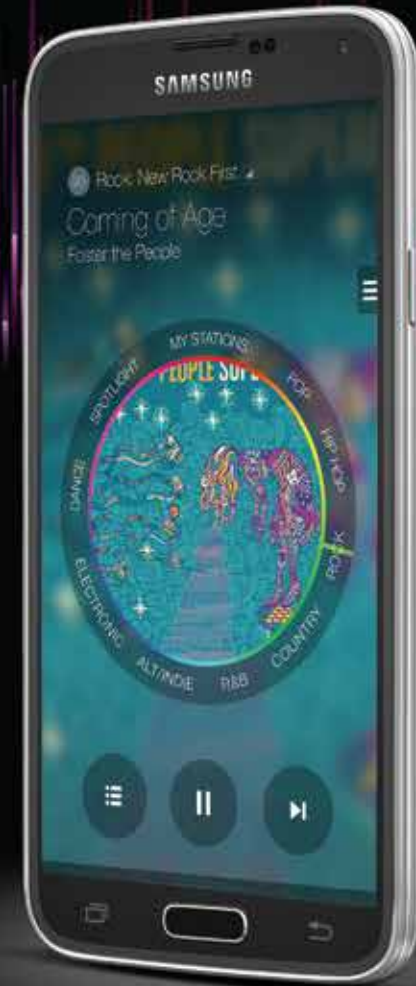
- Launch S Health
- Touch the **Heart Rate** icon
- Place your finger on the sensor at the back of the device

After a few seconds, you'll see your heart rate along with any previous readings you've taken.



# Milk Music™

With more than 200 ad-free stations at your fingertips, you can listen instantly to your favorite artists, hear the hottest hits and discover new genres you might enjoy with a simple spin. You can also create and fine-tune stations in real time to make Milk Music your own. It's all the music you love, all in one place.







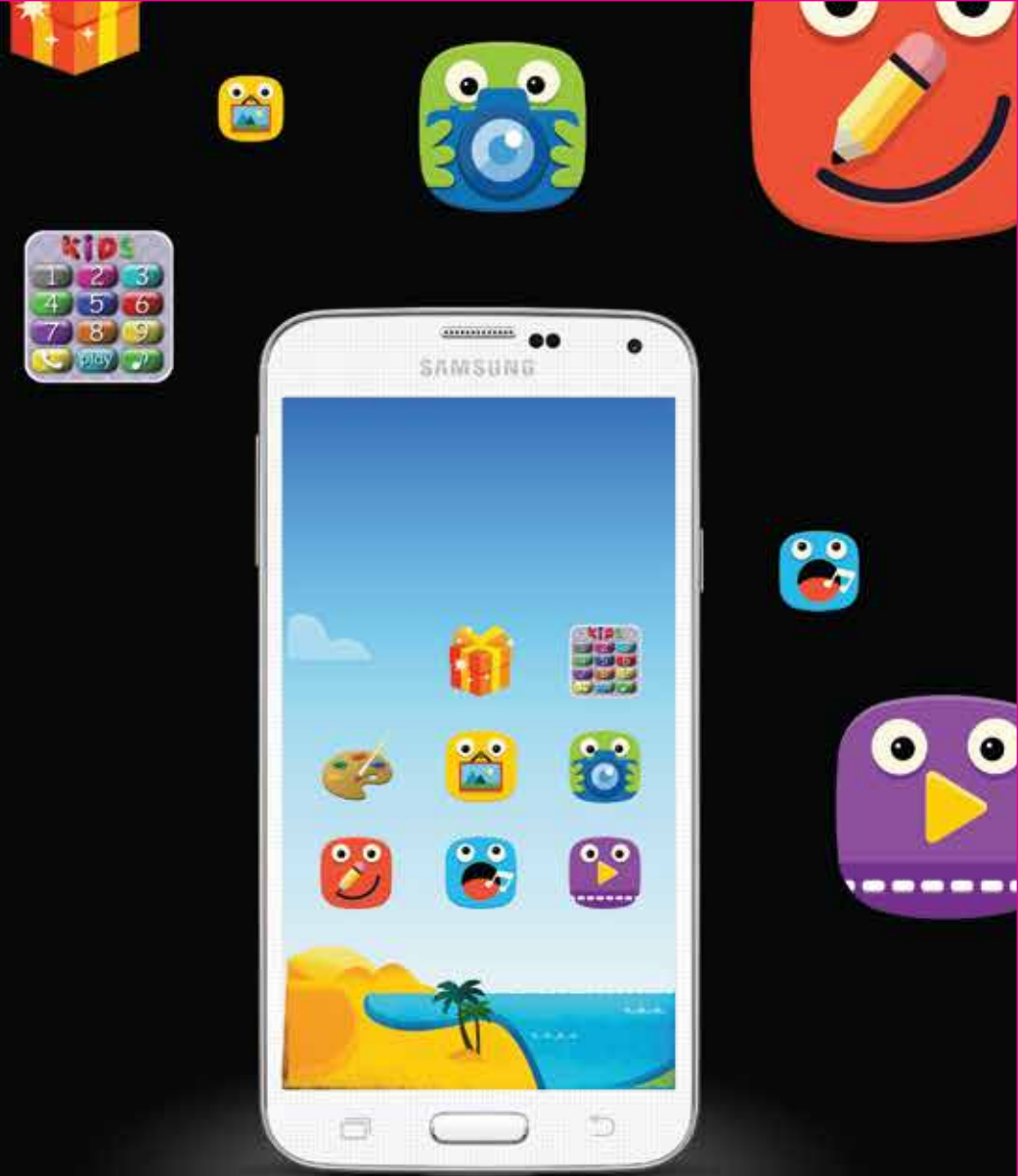


# Kids Mode

Kids Mode delivers a custom interface, characters, games and apps optimized for your little ones, so they stay engaged while keeping your personal information safe. You can also set limits on how long they play and watch. So go ahead, let them have some fun.

## Try It Out – Set Playtime Limits

- Launch Kids Mode
- Touch the **Parent/Child** icon
- Enter the PIN number you created when you first set up Kids Mode
- Touch the **Menu** icon (three horizontal lines) at the top-left of the screen
- Touch **Daily playtime limit**
- Swipe the button at the top-right to green to activate. Then, use the slider or touch the circle to set the time limit





## Secure Fingerprint Scanner

---

It has never been easier to lock and unlock your device. Now you can control passwords and log-ins by simply swiping your fingerprint across the sensor.

### Try It Out – Add Your Fingerprint

- Launch Settings
- Touch **Finger Scanner**
- Touch **Fingerprint manager**
- Touch the **Add** icon to add your fingerprint, then select **OK**
- Swipe your finger downward across the Home key until the device registers your fingerprint

# Smart Switch™

Smart Switch is a simple, do-it-yourself tool<sup>††</sup> that lets you move content from your old smartphone to your new Samsung Galaxy device without using multiple applications. You can transfer personal data, media and apps with one service without having to use multiple tools. And when it comes to apps, Smart Switch will match the apps on your old device with identical or similar Google Play™ apps that you can quickly download.

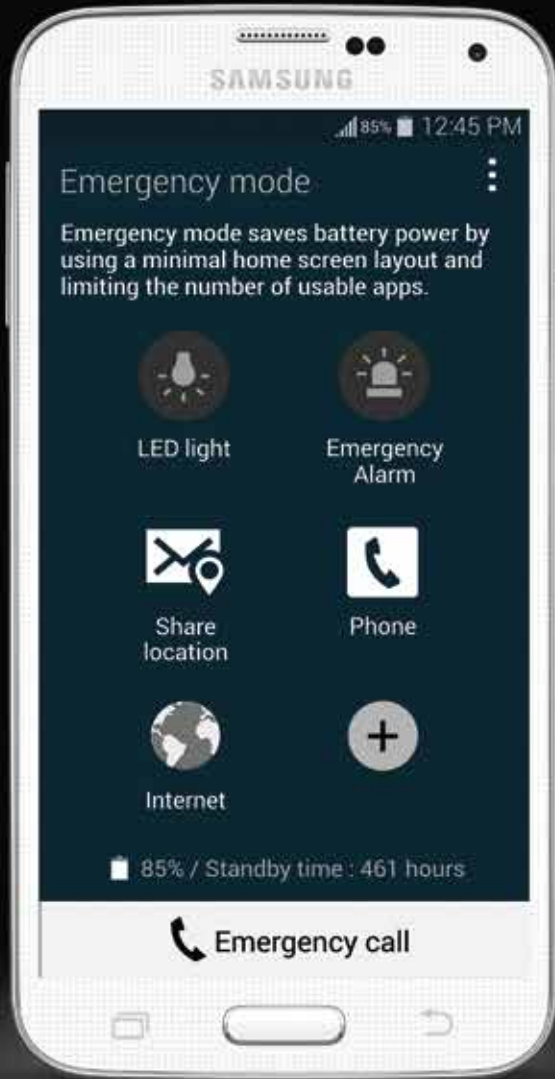
## Try It Out – Match Your Apps

- Download and launch the Smart Switch Migration app from Google Play
- Follow the onscreen tutorials and touch **Agree** to accept the terms and conditions

The main page will open up showing exact app matches. The Matches tab lists all the apps that have an exact match on Google Play. The Recommendations tab lists similar, recommended apps on Google Play. Select the apps you wish to download.







## Safety Features

Access severe weather alerts or send a distress signal in an instant.

Switch to Emergency Mode to save your battery power as you reach out for help or alert friends and family to let them know you're in need of their assistance.

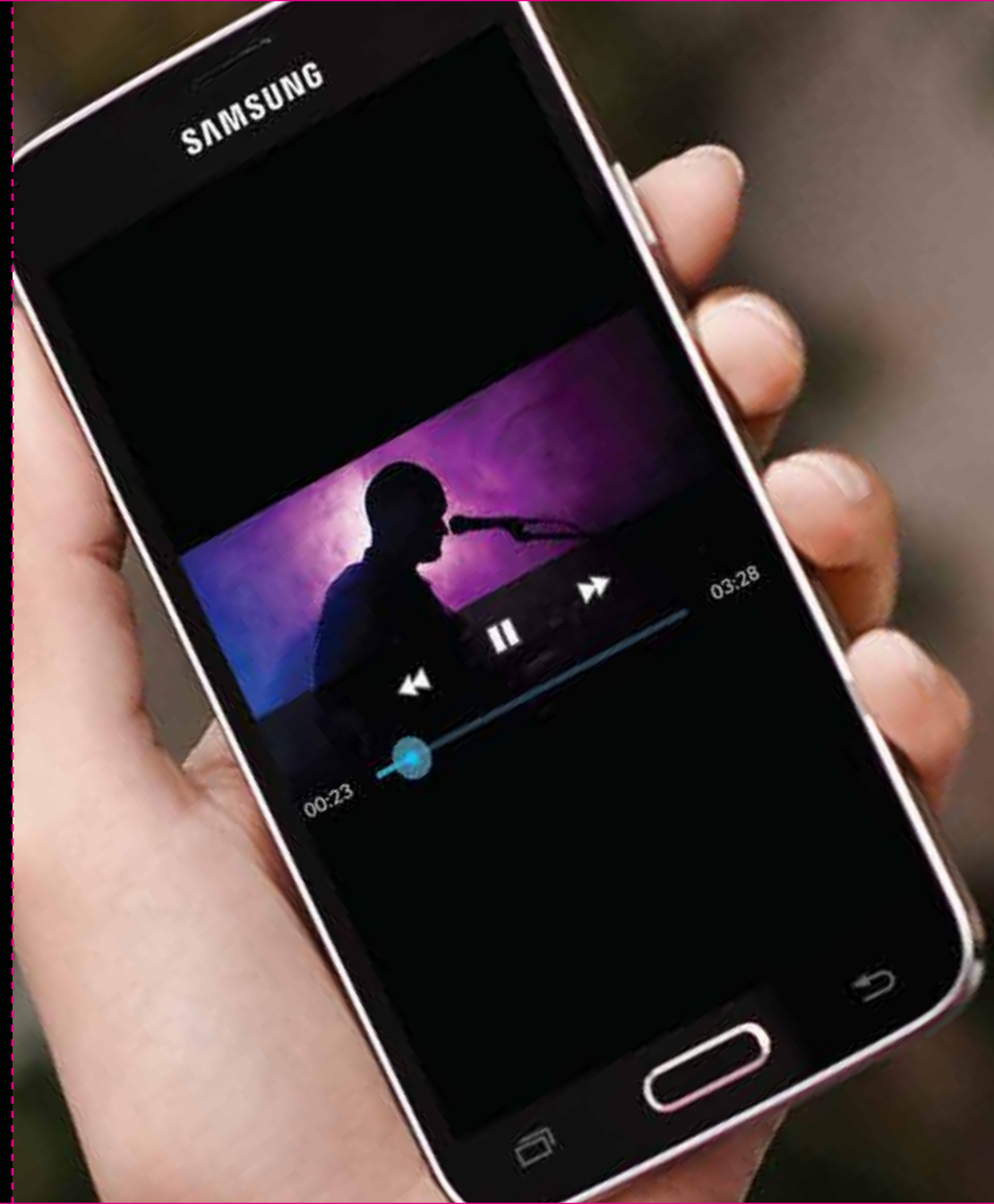
### Try It Out – Switch to Emergency Mode

- Launch Settings
- Touch **Safety assistance**
- Touch **Emergency mode**
- Swipe the ON/OFF button at the top-right of the screen to the **ON** position
- Agree to the terms and conditions, then touch **OK**
- Touch **OK** again after reading the details about Emergency Mode

## Stay Up to Speed

---

Enable faster downloading, streaming and browsing on the world's quickest Wi-Fi® connectivity and the latest LTE connectivity available on any network. Streaming a movie while waiting for a flight? Working on a presentation from a crowded coffee shop? Download Booster\*\* combines your Wi-Fi and LTE to help every action happen in a flash.



# Samsung Galaxy S<sup>®</sup> 5

## Product Specifications

Display	5.1" Full HD Super AMOLED <sup>®</sup> (1080 x 1920)
AP	2.5GHz Quad-Core Processor
OS	Android™ 4.4.2, KitKat
Camera	Rear – 16MP phase detection autofocus With flash & zero shutter lag, BSI Front – 2MP camera, Full HD recording @30fps, BSI
Video	Codec – H.263, H.264(AVC), MPEG-4, VC-1, WMV7/8, Sorenson Spark, MP43, VP8 Recording & Playback – UHD@30fps, HDR, video stabilization
Audio	Codec – MP3, AMR-NB/WB, AAC/ AAC+/ eAAC+, WMA, Vorbis, FLAC
Camera Features	Auto, Beauty Face, Shot & More, Panorama, Virtual Tour Shot, Dual Camera, More features by download
Additional Features	Camera – Hybrid AF, Real-Time HDR Imaging, Selective Focus Fitness – HRM, S Health™ 3.0 Life – Water & Dust Resistance, Fingerprint Scanner, Emergency Mode Speed – Wi-Fi <sup>®</sup> (802.11ac) 2x2 MIMO, Download Booster**
Google Mobile™ Services	Chrome™, Google Drive™, Downloads, Photos, Gmail™, Google™ Search, Google+™, Google Settings, Hangouts™, Google Maps™, Play Books, Play Games, Play Newsstand, Play Movies & TV, Play Music, Google Play™ Store, Google Voice Search™, YouTube™
Connectivity	Wi-Fi 802.11 a/b/g/n/ac (HT80), MIMO (2x2) GPS / GLONASS NFC, Bluetooth <sup>®</sup> 4.0 (LE) USB 3.0 / ANT+ IR LED (Remote Control), MHL 2.1
Sensor	Gesture (IR), Accelerometer, Geomagnetic, Gyro, RGB Ambient Light, Proximity, Barometer, Hall, Fingerprint, Heart Rate Sensor
Memory	16GB User memory + microSD™ slot (up to 128GB) 2GB LPDDR3 Portion of memory occupied by existing content
Dimensions	142.0mm x 72.5mm x 8.1mm, 145g
Battery	2,800mAh



Features and specifications are subject to change without prior notification.